

POINTS OF LIGHT

BioGeometry news and views from Kris Attard



AWARENESS WORKSHOPS

BioGeometry...MindScape ...Sacred Geometry

2

January 2013

The Epiphany of 2013 (or of 2012)

Happy New Year everyone! 2013 is here and hopefully bringing with it positive plans, possibilities and resolutions more than every other year usually brings with it.

The 6th January is known as the Epiphany which marks the end of the

..”the old traditions were steeped in some truth or basis, even if it gets misunderstood down the ages and the true meaning is often lost in obscurity”

12 Days of Christmas (in one of its versions, as there are also the 12 days preceding Christmas). In Malta, farmers traditionally used these days which they called *L-Irwiekel* as a prediction or almanac of the climatic conditions they could expect in the coming year. Each day of the 12 represented a month, and it is considered to have been an amazingly accurate system for those who knew how to use it properly.

Hopefully these last few days may have brought with them positive insights for 2013. The tradition of

making New Year’s Resolutions is an old one that is founded in truth, namely the concept we explained in the last newsletter about the new year being a threshold time and in that respect, its power to help us achieve aims we set out for. A point I always strive to make in BioGeometry is that the old traditions were steeped in some truth or basis, even if it gets misunderstood down the ages and the true meaning is often lost in obscurity.

END OF THE WORLD POSTPONED

The most unusual feature of the last few weeks of course was the whole

21st December 2012 phenomena. For many lay people it meant nothing more than just another Y2K sham, maybe an excuse for authors, movies and others to make money from. For those whose attachment to the pleasures of the material realm got them a tiny bit worried about whether what “they say that the world may end on 21.12” might be true, it was maybe like a (long booked) appointment at the dentist... a huge build-up of hype, hope and fear which then dissipated when nothing painful happened, and they woke up on the morning of the 22nd as usual to their coffee and the only
(continued on page 2)



Upcoming book on Biosignatures—testimonials needed.

Dr Ibrahim Karim just announced that he is preparing a book on the Biosignatures. He announced this on Facebook, and stated that he feels that it is time to put this knowledge (and presumably the vibrations of these powerful forms) out there, so people have access to the knowledge of using them not only in BioGeometry trainings.

To do its job, such a book will require

several different testimonials on the use of Biosignatures and the effects they engendered. I know many of you have already shared with me some amazing results you obtained with Biosignatures, especially those BodyTalk practitioners for whom the Biosignatures regularly come up in your session protocols and has powerful effect on people. All testimonials are welcome, not just clinical ones

of course but also from everyday life use. So please contribute your testimonials to be used in this book. You may contact Dr Karim yourself through a Facebook message, or send them to me to forward, or if you wish to email Dr Karim let me know and I will send you an email address where you can contact him.

- THE PROOF OF BIOGEOMETRY EFFECTS... CHECK OUT THE ETA SCAN TESTS OF THE BG MOBILE PHONE CHIP ON PAGE 3

Inside this issue:

THE EPIPHANY OF 2013 (OR OF 2012)	1,2,3
UPCOMING BOOK ON BIOSIGNATURES, TESTIMONIALS NEEDED	1
ETA SCAN TESTS OF BIOGEOMETRY MOBILE PHONE CHIP	3
BIOGEOMETRY TRAININGS AND OPPORTUNITY	4
UPCOMING TRAININGS AND SEMINARS	4

The Epiphany of 2013 (or of 2012) — continued from page 1

snap, crackle and pop was that from their breakfast cereal.

However for those of us who have a different understanding of the significance of this event, a space naturally a world away from the newspaper hype and the sensationalistic, the significance was and still is very much there. The end of the world is not about an actual physical ending, but a metaphysical alchemical change from dead end ways of being to an awareness of the journey thus far, where we need to go and the diversions we need to take.

SO WHERE WERE YOU ON 21.12.12?

On 21st December, I wished to re-visit the temples here in Malta. So with Josette I spent the morning at Ggantija temples in Gozo, so called as legend has it they were built by a race of giants. We went to be at the temples just to be in a quiet space. It was nice that morning, no tourist groups about, just a few individuals, mostly also out to 'do something' at the temples on that particular day. One woman from France said she had thought long and hard about where she wanted to be on 21.12, and she kept getting the sense that she had to be in the temples in Malta. I am thankful for her presence, as she played an amazing crystal singing bowl whose effect very much enhanced the space there and my meditation. I am convinced from personal insights that these temples of Malta, as well as others around the world, are important physical nodal points involved in mankind's very early history in terms of his evolution (talking here about a history not found in school textbooks).

The ancient temples are also very much attuned to certain cyclic harmonics, of which their astro-archaeological features are just the tip of the iceberg. It is well known how on solstices and equinoxes the sun enters the temple right on the altar. Most people think this was just about marking the start of a season. It was this of course, but also much more. The ancients were much more in tune with the cycles and knew about the importance of the threshold times, including bigger ones we are hardly aware of.

21.12 'INCIDENT'

Returning home in the evening I stopped at a cafe shop for a take out

coffee on my way home. Just as I was at the cashier, there was a power cut. (No it probably was not a divine intervention for me to resolve not to drink coffee in 2013, as I seldom drink it and it's mostly decaf...) Now due to some technical issues with the local power station, this should have been no surprise to anyone, but this power cut seemed to freak out the cashier. It did not help that for some reason the back-up generator did not kick in, as it usually would. The girl began to look around with a rising trepidation repeatedly asking her co-workers why the power went, why isn't the generator working, what is going on, what is happening. It was clear what she was thinking....maybe this was no ordinary power cut (the failed generator 'proved' it after all), maybe this was 'that 2012 thing'. Her worry continued to visibly mount, until suddenly the generator kicked in, and she breathed a sigh of relief and mumbled something on the lines "Thank God that's all it was". When I returned home I found this power cut affected all the villages in the area, including ours. The entire evening of 21st December was spent sitting in a room lit up by candlelight. It was a lovely ambient for reflection, and it did make me add a mini resolution for this year to literally turn the lights off more often, and enjoy more the quiet inner feel of candlelight and inner reflection.

THE POWER OF PEOPLE

As this whole incident made me smile, it also made me appreciate how much we perhaps under-estimate the power of collective thinking. More importantly, how much we can help effect those around us in a positive, harmonising way through our own being and in our work. Each time you open the door for the qualities of BG3 to come into a house, a clinic or even a design you drew, unavoidably to some degree you are effecting everyone else as well. This is not about ego or self importance of course, which would totally defeat the purpose and even reverse it, but about a genuine sense of bringing in more Light. Doing our part.

21.12.12 is part of a new global cycle starting from January that may bring various things with it. This includes a fair share of challenges but with them also insights; for it is through challenges that inner insights and spiritual evolution can take place, both on a

personal and collective level. This is partly what this cycle we are entering is all about, and it has the power to be a double-edged sword. It is up to us to choose which side to focus on. To those interested in this subject, I heartily recommend Dr Robert Gilbert's online course on the Winter Initiation (www.vesica.org). Although the 21.12 is passed, the vast part of the course is very useful and applicable knowledge and techniques for taking in more of the energetics shifts this inter-cycle shift is bringing in.

So this year more than ever, it is important for us as BioGeometry alchemists to be more aware of the positive impact we can have on people with our thoughts, feelings and our states of being. The power of the collective is very real indeed, and it is a powerful spiritual exercise to be mindful of your contribution to this collective. It is incorrect to think that we are simply a drop in an ocean of billions. Life works on holistic and



“this year more than ever, it is important for us as BioGeometry alchemists to be more aware of the positive impact we can have on people with our thoughts, feelings and our states of being.”



holographic principles which means that the whole is inside each part, so each of us has the power to make a difference. If the spiritual journey means anything to us, we will also be aware that we have a responsibility in this respect.

BioGeometry gives us the means to test all this in tangible ways. You may remember the experiments we did in BG class, where someone simply writes a thought of gratitude. That balled up piece of paper gets our pendulum rotating due to its emission of the harmonising qualities of BG3, as opposed to the paper on which a meaningless sentence is written which does not emit. We can only imagine how much more effect it has when we are vibrating that kind

(continued on page 3)

(Continued from page 2)

of thought and inner space. Conversely, we can also prove how lies, deceit, desire for power over others, selfishness etc, emit disharmonious frequencies. These frequencies effect

us on all levels, from physical to spiritual, both the person involved and those around them. Food for thought considering modern life. **But at the same time as opening our eyes to what is going on, it is vital to open**

our hearts. Remember we are ourselves the most powerful BG3 emitters! Provided of course we turn the dial from vertical to horizontal.

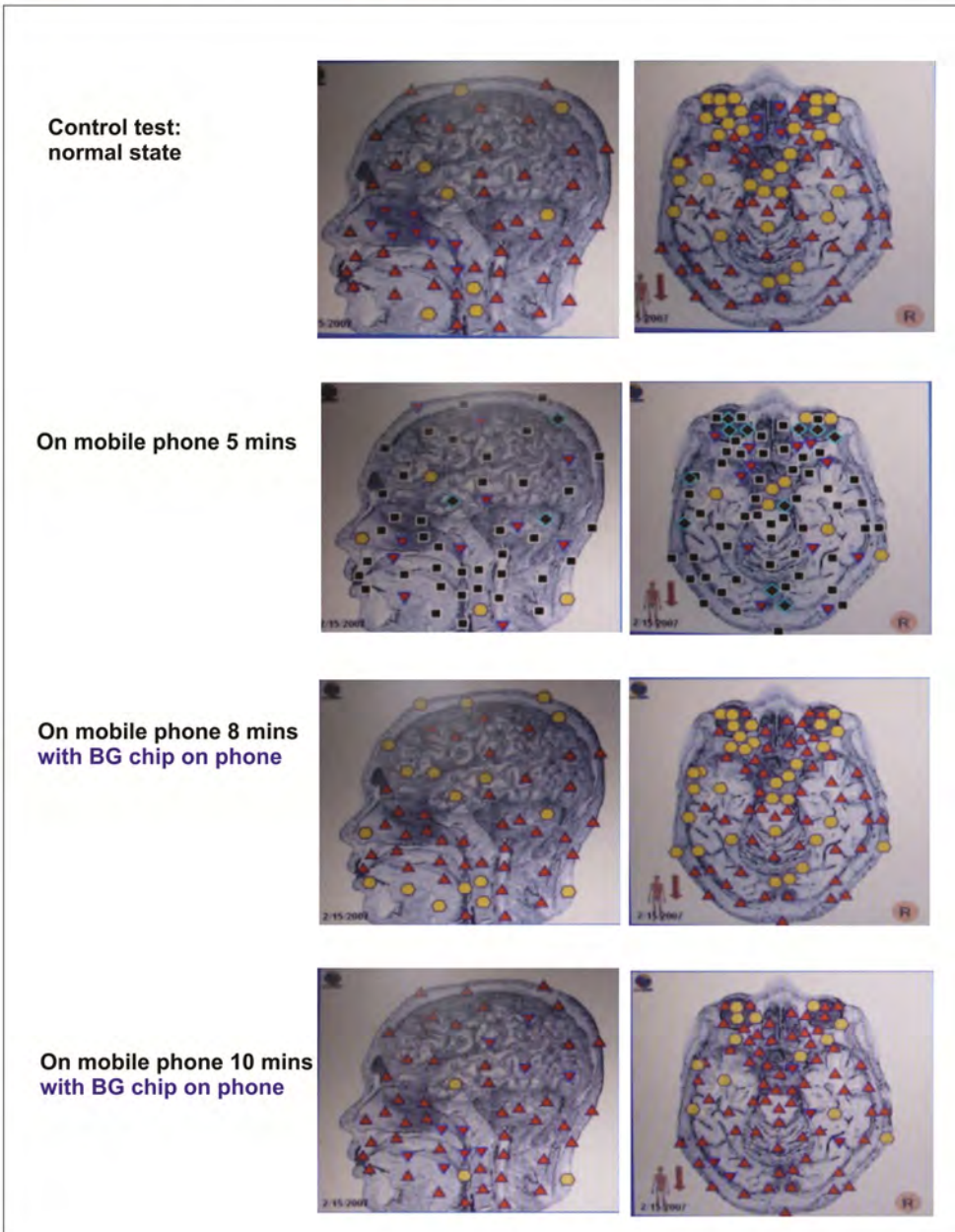
May the Epiphany of 2013 be an enlightening one for us all!

“at the same time as opening our eyes to what is going on, it is vitally important to also open our hearts”.

ETA SCAN TESTING OF MOBILE PHONE WITH AND WITHOUT BIOGEOMETRY CHIP

The coloured dots are the measurement of energy flow in various points in the head. A healthy individual should have a good energy flow through all points.

Yellow = high Red = medium Black = low (i.e. disturbance)



A QUOTATION FROM TWO RADIESTHESIA PIONEERS THAT CAPTURES THE SPIRIT OF A NEW ATTITUDE FOR 2013...

“Negative Green ...is a mysterious vibration, truly a feature of the union between life and death. It has power over the material: it burns, it destroys; but it can also conserve life potentially beyond time and space.”

A. De Belizal and P .A. Morel (Micro-vibratory Physics and Invisible Forces)



BioGeometry trainings and opportunity

www.awarenessworkshops.com

Phone: +356 2137 2681

Mobile: +356 9944 4106

E-mail: krisattard@yahoo.com

This month I am travelling to California for the BioGeometry Foundation Training there. This will be followed in February by classes in Germany, taught in English with live translation, and one in Switzerland (all dates shown below). Please spread the word to anyone you may know who may be interested!

The Foundation Training has a lot of information and techniques to take in, and re-doing the training at some

point is always a great idea. It is amazing how much depth you take in a second time around, especially with a vast subject like BioGeometry. All the more so since one seminar will often contain information the previous one did not, thanks to the expansion of the possibilities of BioGeometry from each Special topics classes which Dr Karim gives, and the meetings he holds with us instructors.

For the California training, due to the sizeable group I am offering the opportunity for someone to re-do it free of charge, if they are willing to help out with the orders of BG items during the seminar. You get to be there and take part fully those 6 days, some of your time will simply be needed mornings before we start and a small part of some breaks to hand out items. Contact me if you're interested. Naturally first come first served.

www.awarenessworkshops.com

FORTHCOMING WORKSHOPS AND EVENTS

Should you wish to organise BioGeometry, Mindscape or Sacred Geometry training in your country or area, please contact me, I will be happy to discuss this possibility with you.

A much-awaited topic in the Special Events was Dr Karim's explanation of the Human Archetype Ruler. A fairly recent BioGeometry development, the Ruler uses the Human Archetype template code. This was discovered before on Egyptian temple walls (e.g. Schwaller de Lubicz) but Dr Karim realised and unlocked its immense potential for BioGeometry. It offers such vast possibilities that it probably represents the future direction of many new BioGeometry techniques.

BIOGEOMETRY FOUNDATION TRAINING 2013

Jan 22—27, San Jose, California

Contact: Dr Laura Stuve Tel: +1 408 647 2429 / laura@quantumbodyspeak.com

Feb 9—14, Wiggensbach, Germany

Contact: Claudia Schembri-Heitmann
Tel: +49 (0) 8370 929421 /

balance@bodytalksystem.net

Feb 26—Mar 3, Geneva, Switzerland

Contact: Graziella Zanoletti Tel +41 (0) 79 2025006 / graziella@eliterent.com

Capetown, South Africa (date to be confirmed, possibly April)

Contact: Lee-Ann Connolly Tel +27 (0)79 399 3520 / lee@thrive-za.com

Other Foundation Trainings planned for 2013 /2014 in Malta, Canada, Scotland

BIOGEOMETRY ADVANCED TRAINING

Date to be confirmed, but tentatively September, Johannesburg, South Africa

Contact: Janet Cronje Tel +27 (0)83270 9088 / janet.cronje@telkomsa.net

Other Advanced Trainings will be announced as they are confirmed, including Germany and UK.

MINDSCAPE (intuition training)

23—24 March, Cork, Ireland

Contact: Therese Tierney Tel: +353 87 7767728 / lovinyoga@gmail.com

ADVANCED MINDSCAPE

May 10-12, South of England, UK

Contact: Eloise Ansell Tel +44 (0) 7766 820285 / eloise@flourishment.co.uk

June 14-16, Belfast, N. Ireland

Contact: Lesley McIntyre +44 (0)7702 393099 / amethyst.nhc@btinternet.com